

Key Features

- Manufactured in Germany using the very latest nano technology,
- Tested & certified - see website for further details
- For use on a range of substrates including brick, stone, concrete and sandstone
- One coat application
- Dries clear, it does not alter the appearance of the building
- Super hydrophobic
- Creates a self-cleaning surface
- Highly breathable
- Helps prevent discoloration and salt efflorescence.
- Helps prevent frost damage



**20 year manufacturers
guarantee**



Find out more from our specialists:

www.properla.co.uk

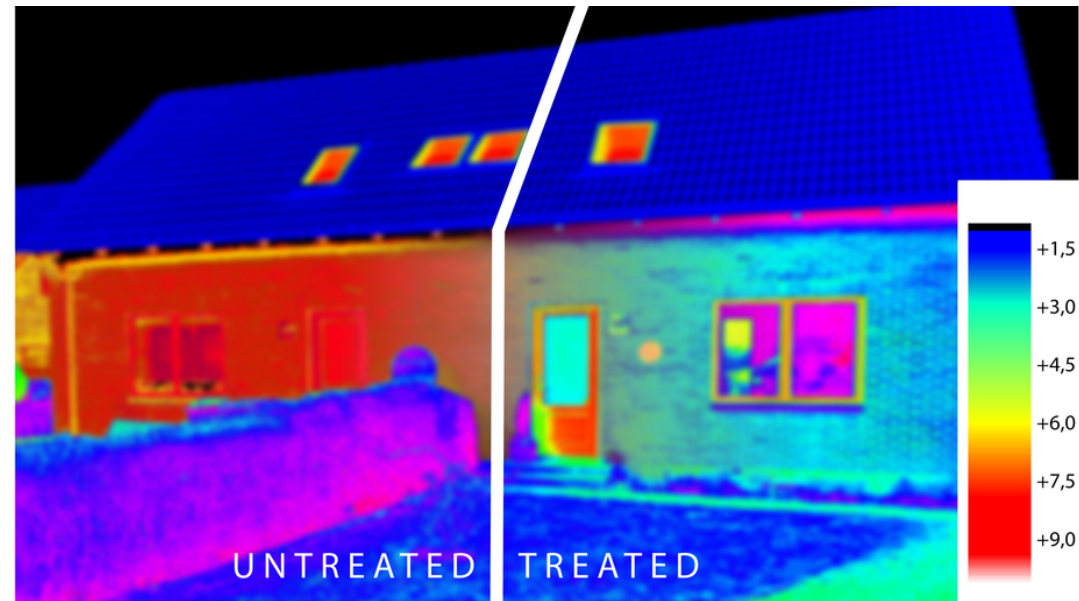
Manufactured in Germany under license for BECO TREAT ApS - Nebelvej 15 - 8700 Horsens

PROPERLA®
SUPER HYDROPHOBIC COATINGS

MASONRY CRÈME

Invisible insulation barrier

Reduce heat loss & your energy bills



Keep the weather out & the warmth in

20 year guarantee

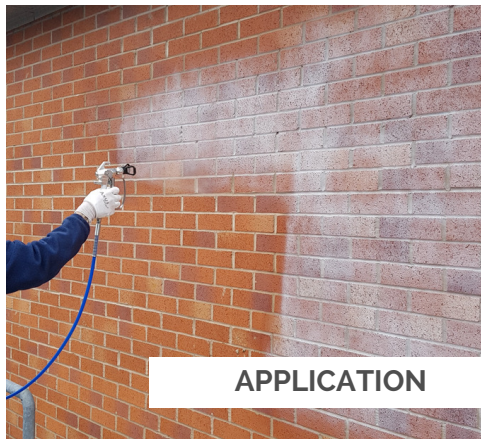


Keep the weather out & the warmth in

Keeping walls dry reduces heat loss and contributes to lower energy consumption and lower energy bills. A damp content of 5% in a plain brick wall can lower the insulation by up to 50%, especially where cavity wall insulation has been installed.

ProPERLA Masonry Crème is an external super hydrophobic coating which improves thermal efficiency by reducing water absorption by more than 95%. Tests have demonstrated that when applied to clay bricks, it slows down thermal heat loss by up to 76.83%

ProPERLA Masonry Crème chemically bonds to mineral building surfaces, penetrating up to 17mm to create an invisible insulation barrier.



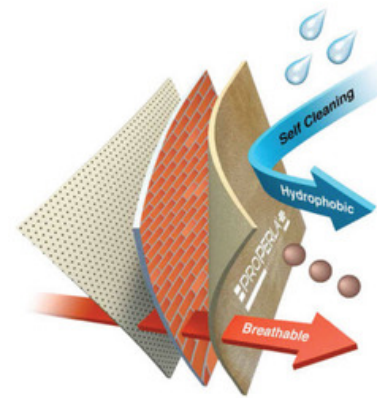
APPLICATION



AFTER TREATMENT

Super hydrophobic

Instead of absorbing into the treated surface, water forms droplets that simply run off the surface - keeping walls dry.



Breathable

There is no restriction on air and moisture escaping. It does not block the pores of the masonry. It has an SD value of 0.03, way better than 0.50 which is considered breathable.

Self-cleaning

Treated masonry remains clean and attractive - dirt is washed away with rainfall. The growth of unsightly moss, algae or lichens is made difficult.

